



DIESEL GENERATOR SETS

R-WB Series

Powered by Baudouin Engines

R-WB1125D6/S

60_{Hz}

Output Ratings

Three-Phase, 60Hz, 1800RPM			
Output	Prime Power		Standby Power
	1125kVA / 900kW		1238kVA / 990kW
Voltage (V)	Frequency (Hz)	Current(A)	Power Factor
416/240	60	1561	0.8
440/254	60	1476	0.8
480/277	60	1353	0.8

- 1) Ambient reference conditions: 1,000 mbar, 25°C, 60% relative humidity
- 2) Standby Power Standby duty, operation under variable load, without Over load;
- 3) Prime Power-Continuous duty operation, under variable load 24/24h -10% over load permissible 1 hour/12 hours

Features

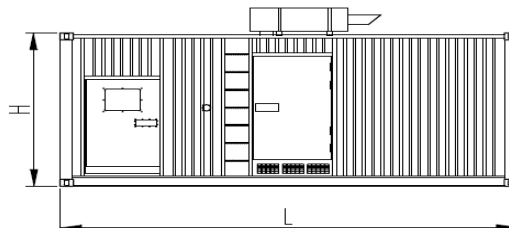
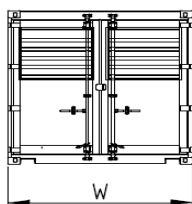
- Strong power, high torque, easy to maintain, easy to start;
- Low noise, low emissions;
- Cabinet made of high quality sheet metal, corrosion-resistant, scratch-resistant;
- Canopy sealing performance, high waterproof, dust-proof, rain, dust and other difficult to access;
- Omni-directional control, easy connection and simple;
- Cranes, fork, pull, drag, easy transportation;
- ≥8-hour fuel tanks;
- Open type with 40°C radiator, Soundproof type with 50°C radiator

Performance Data

Engine Brand & Model		Baudouin & 12M33G1000/6
Alternator Brand & Model		WERNER & WR634E
Control System		HGM6120
Circuit Breaker Type(Standard)		3 Pole MCCB
Fuel Consumption (l/hr)	100% Load	241.3
	75% Load	181.5
	50% Load	125.8
	25% Load	73.7

Dimensions and Weights

Content		Open Sets	Soundproof Sets(20HP)
Dimensions: (mm)	L	4300	6058
	W	1750	2438
	H	2460	2591
Weight (kg)		5500	7000



Engine Brand / Model & Baudouin / 12M33G6D3/5

No. of Cylinders / Alignment	12 / In V	Gross Engine	Prime	1007
Cycle	4 Stroke	Power (kW)	Standby	1108
Bore / Stroke	150 mm / 185 mm	Compression Ratio		15 : 1
Induction	TCA	Displacement (L)		39.2
Cooling Method	Water	Governing Type		ECM
Lubricant Oil	15W40-CF4	Net weight (kg)		3527
Lubricant Oil Capacity (L)	160	Coolant Capacity (L)		220

Alternator Brand / Model & WERMA & WR634E

Rated Capacity (kVA)	1145	A.V.R. Model	MX321
Rated Power (kW)	916	Voltage Regulation (no load- full load)	± 1.0%
THF(BS EN60034 – 1)	<2%	Underspeed Protection	Standard
Bearing Number	Single	Protection	IP23
Windings	100% Copper	Phase Sequence	A(U), B(V), C(W)
Silicon Steel Core Processing	One Piece Punching	TIF(NEMA MG 1-22)	<50
Insulation Class	H	Excitation System	Self-excited, SHUNT
Winding Pitch	2 / 3	Ambient Temp.	50 °C
Amortisseur Winding	Full	Stator Rated Temp.	125 °C

Control System:



HGM6120

- 132*64 LCD display with backlight, optional language interface (Chinese, English, Spanish, Russian, Portuguese, Turkey, Polish and French), push-button operation;
- Acrylic screen, improved wearable and scratch resistance property;
- Silica-gel panel and keys can well adapt to higher and lower temperature;
- With RS485 communication port, can achieve “three remote” functions via MODBUS protocol;
- With CANBUS port which can be connected to electronic injection with J1939, it not only can monitor frequently-used data (such as water temperature, oil pressure, rotated speed and fuel consumption, etc.) but also can control start, stop, high speed and low speed (controller with CANBUS port is needed) via CANBUS port.
- Adapt to 3P4W, 3P3W, 1P2W and 2P3W (120V/240V), 50Hz/60Hz AC power system;
- Can measure and display 3 phase voltage, 3 phase current, frequency, power parameter of mains/gens;

Documents

<ul style="list-style-type: none"> ● Engine parts manual and original data ● Alternator original data ● Controller system original data ● Generator set factory test report 	<ul style="list-style-type: none"> ● Generator set maintenance record manual ● Generator set instruction manual ● Generator combination certificate
---	--

Optional

Engine	Controller System
<ul style="list-style-type: none"> ● Water heater ● Fuel heater ● Oil heater ● Secondary silencer ● Water separator 	<ul style="list-style-type: none"> ● Compartment operation remote control system ● With three remote control screen ● Auto Transfer Switch ● Multiple units are automatically connected in synchronize ● Centralized monitoring
Alternator	Others
<ul style="list-style-type: none"> ● Anti condensation heater ● Permanent magnet generator (PMG) ● Drop CT(Paralleling) ● Other alternator temperature rise level ● Stator winding temperature sensor RTD ● Bearing temperature sensor RTD ● Air filter 	<ul style="list-style-type: none"> ● Separate fuel Tank ● Buried storage tank ● Fully automatic oil supply system ● Remote water tank ● Waterproof Type genset ● Trailer Type genset ● Soundproof Type genset ● Open Type genset

Service Commitment

- The products provided are all new products. each gensets undergoes strict factory inspection.
- Products are provided with “three guarantees” service, the period is 12 months after the unit is adjusted and the accumulated running time is 1000 hours, whichever comes first.
- The services and accessories of products can be obtained from the after-sales service department (86-510-83781999-1009).



E-Mail: info@rcgpower.com

We reserve the right to make changes in model, technical specification, color, configuration and accessories without prior notice. Please contact the us before ordering.

